



Supported by  
NB-Rail Association

## RECOMMENDATION FOR USE

### NB-RAIL COORDINATION GROUP

Administrative Decision according to Interoperability Directive  
(EU) 2016/797 art. 30.6



Co-funded by  
the European Union

RFU-PRM-066

Issue 02  
Date 23/06/2020

#### TITLE

APPLICABILITY OF TURNING CIRCLE IN UNIVERSAL TOILET

#### ORIGINATOR

TÜV SÜD Nederland BV

#### SUBJECT RELATED TO

- Directives (EU) 2016/797 and 2008/57/EC
- TSI PRM 2008/164/EC as amended by 2012/464/EU

#### AMENDMENT RECORD:

23-05-2012 First issue

18-03-2020 Template (header) updated

#### DESCRIPTION AND BACKGROUND EXPLANATION

##### Scope

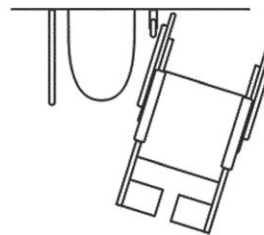
This RFU covers conformity assessment concerning interoperability constituent universal toilet according to TSI PRM 2008/164/EC.

##### Background

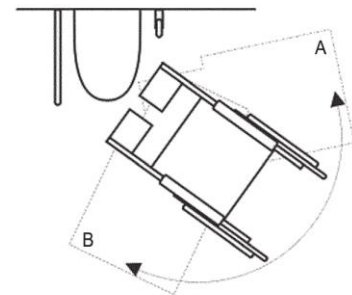
According to **TSI PRM** chapter 5.4.2, the requirements for interoperability constituent toilet modules are given in chapter 4.2.2.6.

In **4.2.2.6.3.1** the following is stated:

*“There shall be sufficient space inside the toilet compartment to enable a wheelchair as defined in Annex M to be manoeuvred to a position adjacent to the toilet seat, see figure 8a.”*



Side approach



Diagonal approach

FIGURE 8a

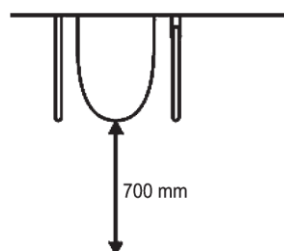


FIGURE 8b

*“In front of the toilet seat there shall be a minimum clear space of 700 mm as shown in figure 8b.”*

*“All amenities (wash basin, soap dispenser, mirror, water dispenser and hand dryer) shall be readily accessible to a person in a wheelchair.”*



Supported by  
NB-Rail Association

## RECOMMENDATION FOR USE

### NB-RAIL COORDINATION GROUP

Administrative Decision according to Interoperability Directive  
(EU) 2016/797 art. 30.6



Co-funded by  
the European Union

**RFU-PRM-066**

Issue 02

Date 23/06/2020

In Annex M the *transportable* wheelchair is described, in M.2 its dimensions are defined, especially its turning circle being 1500 mm.

In **chapter 4.2.2.7**, which is relevant for clearways, the following is stated:

*“A turning space, with a minimum diameter of 1 500 mm, shall be provided adjacent to the wheelchair space for the disabled person in the reference wheelchair to turn the wheelchair around.”*

#### Description of the situation:

Chapter 5.4.2. does not require chapter 4.2.2.7 to be assessed as Part of IC universal toilet.

Question: Is a turning circle of 1500 mm required in the universal toilet?

#### RFU PROPOSAL

Depending on the abilities of a person in a wheelchair, the person will either use the side approach or the diagonal approach to the toilet seat. If the legs are able to support the person, the person will probably use the diagonal approach and turn while standing. If the person is not able to stand, the person will rather use the side approach and move to the toilet seat using the arms to support the body.

It is allowed that the person in a wheelchair has to enter the toilet cabin forwards or backwards depending on the desired access direction to the toilet seat.

As long as it is possible for the person in the wheelchair to enter the toilet cabin forwards or backwards, close the door, move the hinged handrail, access all amenities (wash basin, soap dispenser, mirror, water dispenser and hand dryer), open the door and leave the toilet cabin forwards or backwards, and the dimension given in chapter 4.2.2.6.3.1 for the toilet fit together with the dimensions for a wheelchair according to annex M, the toilet is considered to fulfil all related requirements of TSI PRM.

#### THIS RFU WAS AGREED ON

PLENARY MEETING 059

#### THIS RFU ENTERS INTO FORCE ON

23/06/2020 (DATE OF PUBLICATION)

FROM THIS DATE ON THIS RFU CAN BE APPLIED INSTEAD OF THE PREVIOUS MANDATORY VERSION.

#### RFU APPLICATION IS MANDATORY STARTING FROM

23/06/2020

AT THIS DATE ANY PREVIOUS VERSIONS OF THIS RFU WILL BE WITHDRAWN.

RFUS SHALL BE APPLIED BY ALL NOBOS. PLEASE REFER TO RFU-STR-702, CHAPTER 3 OF THE SECTION “DESCRIPTION AND BACKGROUND EXPLANATION”, FOR THE LEGAL BASIS



Supported by  
NB-Rail Association

## RECOMMENDATION FOR USE

### NB-RAIL COORDINATION GROUP

Administrative Decision according to Interoperability Directive  
(EU) 2016/797 art. 30.6



Co-funded by  
the European Union

**RFU-PRM-066**

Issue 02

Date 23/06/2020

SUPPORTING THIS OBLIGATION.

#### ERA COMMENTS

PLE 059 – 17/06/2020: NO COMMENTS